

PUBLIC ART PROGRAM

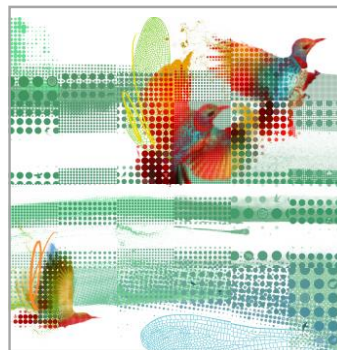
Dublin Transit Center Parking Garage Project



The Alameda County Arts Commission manages the County's Public Art Program which was established by the Alameda County Board of Supervisors in 1994 through the Public Art Ordinance. The Public Art Program presents an extensive collection of artworks in County-owned buildings. Additionally, the Arts Commission manages the public art in outdoor spaces throughout the County's unincorporated areas. The goal of the County's Public Art Program is to provide positive, uplifting art experiences for the community.

The Public Artwork for the Dublin Transit Center Parking Garage was managed by the Alameda County Arts Commission in partnership with the Alameda County General Services Agency. The new parking garage is adjacent to the Dublin-Pleasanton BART station and is intended to limit vehicle miles for commuters and reduce greenhouse gas emissions in the Dublin-Livermore-Amador Valley area. This project supports the County's vision for accessible infrastructure and a healthy environment. An Artist Selection Committee, comprised of Dublin community members, selected Bay Area artist Phillip Hua for this project. The artwork is featured on the 5-story glass stair tower at the corner of Campus Drive and Martinelli Way. Hua designed the artwork digitally and the art files were supplied to a specialized fabricator who produced the glass using a highly durable, permanent process called ceramic frit printing.

Artist Phillip Hua's design features flocks of birds soaring through the sky symbolizing movement in a natural form. This idea of movement celebrates community members who are in motion, using the parking garage and traveling throughout the Dublin community and beyond. The design features birds found in the Dublin region including hummingbirds, northern flickers, great horned owl, red-tailed hawks, and egrets.





Hua's public art project is a collaboration with the Dublin community. Hua invited community members to observe Dublin's natural world and to share ideas of animals, birds, insects and plants to include in the smaller dots found within the overall image. Over 200 community members responded with more than 100 ideas which were used to inspire the small elements in the final artwork. From afar, the design focuses on the flocks of birds while up close, the design contains discoverable images of nature inspired by the community.

"My goal as an artist is to instill an appreciation for nature. With this artwork, I want viewers to take a moment to notice the natural world around them."

– Phillip Hua, Artist



Community Involvement & Artist Selection Process

Community involvement and engagement are at the core of this project. Community members were involved in the project by contributing to a community survey about Dublin, participating in community meetings, providing comments about the artists' proposal designs, serving on the artist selection committee, and providing feedback during the design development.

Artist Phillip Hua was chosen by an Artist Selection Committee comprised of Dublin community members. The Artist Selection Committee members for this project are Robert Bennett, Sara Fayyaz, David Hess, Margaret Liang, A. Kelly Paschal-Hunter, Ryan Reichert and Julia Tomtania. Additionally, community member and Alameda County Arts Commissioner Sawsan Wolski served as an advisory member on the committee.

The appointed members of the Alameda County Arts Commission and the Public Art Advisory Committee provide guidance and approval of all public artworks. The Alameda County Board of Supervisors approves the artists' contracts for the commissioning of new artworks. The Office of the Alameda County Arts Commission is division of the Alameda County Auditor-Controller/Clerk-Recorder Agency led by Melissa Wilk. To learn more about the Alameda County Arts Commission's programs and services, please visit the Arts Commission website and follow on Facebook and Instagram.

Contents and images of the images in this document may not be used in part or in whole without written permission by the Alameda County Arts Commission. Original artwork copyright Phillip Hua 2024.